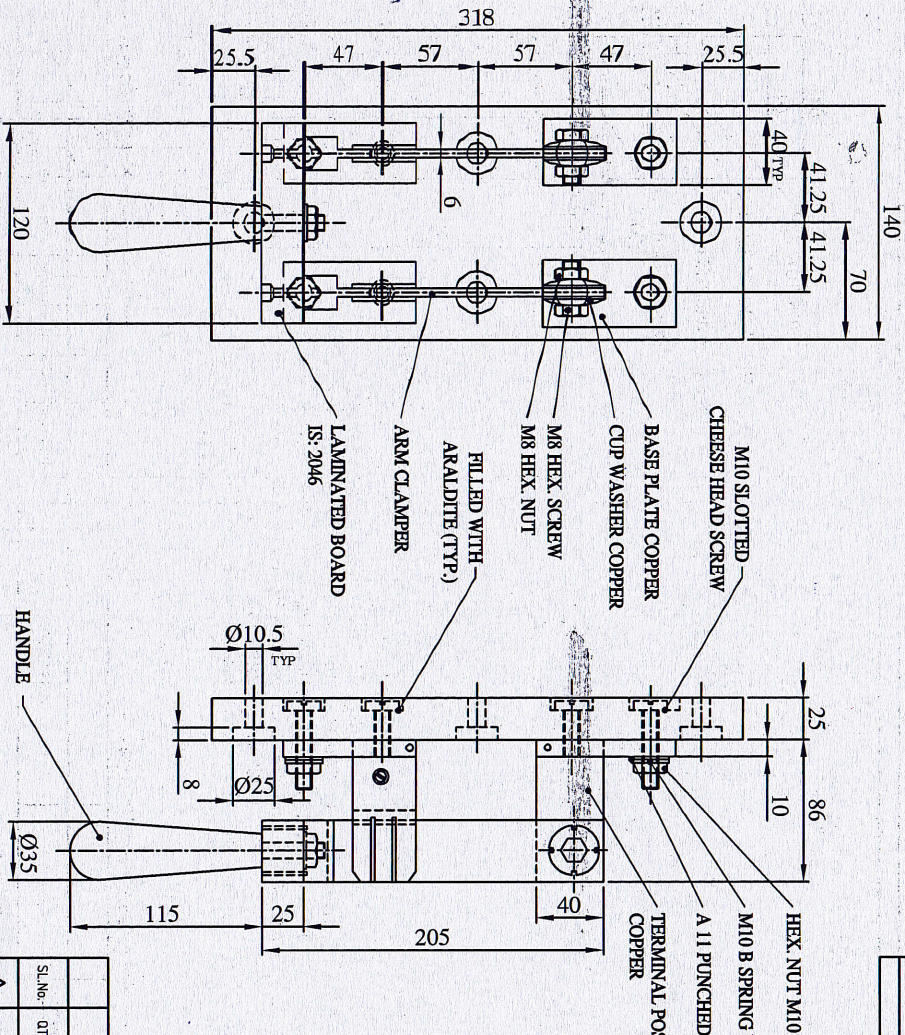


GRADE No.	N12	N11	N10	N9	N8	N7	N6	N5	N4	N3	N2	N1
VALUE	50	75	10.5	6.3	3.2	1.6	0.8	0.4	0.2	0.1	0.05	0.025
SYMBOL												

COPY RIGHT & CONFIDENTIAL THIS DOCUMENT IS THE EXCLUSIVE PROPERTY OF BEML & CONTAINS CONFIDENTIAL INFORMATION. THIS DOCUMENT OR ITS CONTENTS SHALL NOT BE USED, REPRODUCED OR DISCLOSED IN WHOLE OR IN PART, WITHOUT PRIOR WRITTEN PERMISSION OF BEML. THIS DOCUMENT & ALL ITS COPIES SHALL BE RETURNED TO BEML ON DEMAND. DRAWING RELEASED FROM P.L.M. PHYSICAL SIGNATURE NOT REQUIRED



MACHINING DEVIATIONS	RANGE									
	0 - 6	6 - 30	30 - 120	120 - 315	315-1000	1000-2000	2000-4000	ABOVE 4000	RA	
FOR LINEAR DIMENSIONS	TOLERANCE	±0.1	±0.2	±0.3	±0.5	±0.8	±1.2	±2	±3	~
FOR DIMENSIONAL TOLERANCES OF SHEET METAL PARTS AND WELDED STRUCTURES, REFER STD. RD-227										
UNSPECIFIED TOLERANCE FOR LINEAR AND ANGULAR DIMENSIONS REF. IS 2002 (PT-1) (MEDIUM)										
VALUES OF SURFACE TEXTURE SHALL BE AS PER COMPANY STD 05. 102C.										
WELDING SHALL BE CARRIED OUT AS PER IS: 5955-96										
STATUS:										

UNCONTROLLED

NOTE:-

1. COPPER USED SHALL BE OF ELECTRICAL GRADE
2. HARDWARES SHALL BE ZINC PLATED
3. SPRING ACTION OF THE SWITCH ARM SHALL BE ADEQUATE TO HOLD THE ARM IN OFF POSITION DUE TO VIBRATION ETC.
4. CONTACTS SHOULD BE TIGHT & THERE SHOULD NOT BE ANY ARC WHEN THE RATED CURRENT IS PASSED
5. OTHER DETAILS AS PER THE MANUFACTURERS STANDARD PRACTICE

SL.No.	QTY	PART / STOCK No.	DESCRIPTION	SIZE	COMPANY STD./S	Wt. (kg)
			OHE CAR			
			PRODUCT			
			REF DRG			
			MATERIAL			
			HEAT TREAT			
			SURFACE TREAT			
			TITLE			
			APPRO			
			REV'D			
			CHKD			
			DRWN			
			SCALE			
			NTS			
			DRG No.			
			897-21125			
			ALT			

KNIFE SWITCH
(400 AMPS DPST)

BEML BEML LIMITED

897-21125

A3